

President  
 Josh Pichanick  
 2500 - 10 Brant St.  
 Burlington, Ont.  
 L7P 4L9  
 905-335-3275

Treasurer  
 Ken McCuaig  
 2143 Russet Rd  
 Mississauga, Ont.  
 L4Y 1C2  
 905-277-3029

## THE CHIP FLYER

ISSUE: 24

FEBRUARY 1998

### NEXT MEETING

Casual Evening - Members only - **Wednesday** February 11 - 7:00 pm to 10:30 pm  
 Formal Evening - Members and Guests - **Thursday** February 19- 7:00 pm to 11:00 pm

### MESSAGE FROM THE PRES

Whether the weather (just had to slip that in) had any effect on the attendance of our January meeting – well obviously it did.

Thirty four people managed to brave the elements, including two visitors and a new member, Gerry Robbins of Waterdown, welcome aboard Gerry.

Just hold on a second, I have a call coming in ---- O.K., it was our Membership Secretary, Cliff Rose, to say that as of Tuesday 20<sup>th</sup> he has received 59 renewals. For those who intend to renew their memberships, but have not yet done so, remember, Cliff knows where you live!

For those who do not intend to renew, we are really sorry you can't play with us anymore.

As for our new home – WOW – but Jim Campbell said it best – "we have moved from a Cadillac to a Rolls Royce". Members of the Tansley Woods staff were present and introduced by our Vice President, Brian Graham, who also mentioned absent staff members, Sales & Marketing Coordinator Lori Kelly, Facility Operators Lowel Crane and Don McEwan who were instrumental in arranging the excellent storage facilities.

We were addressed by Denise Vickers – the Swim

Program Coordinator, who warmly welcomed the GHWG as one of their family of "Partners", being a number of other independent groups who also rent space and feature programs such as Yoga, Swimming, Karate, etc. etc.

If our Editor, Frank Ditomaso has published a photo of our January 15<sup>th</sup> feature demonstrator, you will be happy (or not) to know it was definitely not Speedy Gonzales, wearing a magenta pink bandana. It was me, wearing the cute bandana, especially made and fitted by Ken McCuaig. He figured that if I could appear last year looking like Kenny Rogers, well, why not Speedy – Andalê Andalê, Arriva!



Thank you Ken and also for the great pool table covers.

Our 2<sup>nd</sup> V.P. and Librarian, Kevin Ellis announced that **many** of the GHWG books etc. are **still** outstanding. Remember, the penalty is 6 months on the electric lathe, so please let Kevin know immediately if you are AC or DC.

Our thanks to Doug Newlove, who needed six large volunteers to carry in the logs and slabs he donated to the raffle table. Also, my thanks to Wally Muford for missing the meeting – I won three times and naturally, picked the biggest pieces on the table, just kidding Wally me son.

A big treat on March 25<sup>th</sup>, a Wednesday night, has now been confirmed by Robert Sorby of England and Busy Bee Tools (they will have inventory for sale) as the night of the Sorby demonstration.

This will be in addition to our regular meeting on March 19<sup>th</sup>.

As Robert Sorby have listed the event on Internet, we are unable to estimate the attendance, so, to be safe, have rented the Auditorium at the Mainway Arena at Walkers Line and Mainway.

See Frank's "What's coming up" column for details.

Josh

## JANUARY MEETING

In addition to the great new surroundings at Tansley Woods, the members were treated to a turning demonstration by Speedy (Josh) Pichanick, who is not only the president of the GHWG but also part time stand up comic.

Josh presented the tools and techniques to turn a curved lip bowl with a square rim. This type of rim presents additional opportunities not normally experienced with round rims, in that you get four chances per revolution to break you knuckles.



The most difficult part is undercutting the rim and for this Josh has ground a special scraper that has the familiar round shape used for undercutting and a negative rake. The rake is achieved by putting a bevel on both edges, much like a skew. This rake makes the tool virtually catch proof in the tight quarters under the rim.

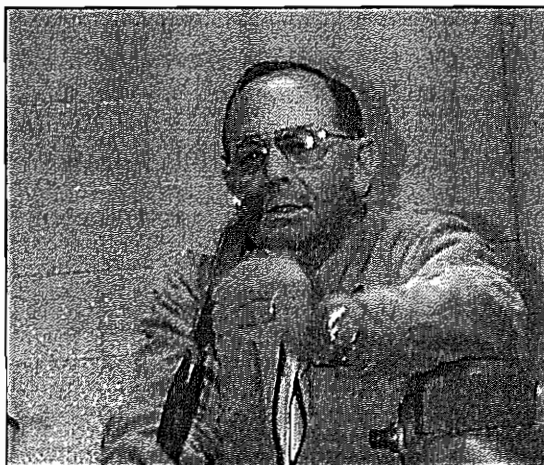


This bowl was being turned from Black Walnut although Josh usually prefers English Walnut because of it's high tensile strength. A tough wood is required because of the flimsy turned over

rim that ends in a point at each corner.

Josh began the turning with the block screwed to a faceplate. It is important that the block be square and each side square to the mounted surface, otherwise, the four corners would not end up symmetrical. He flattened the surface toward the tailstock and turned a 4" diameter dovetailed shape recess for mounting on his scroll chuck. This surface would become the bottom of the bowl. The recess would also fit over the pedestal, so it should be at least  $\frac{1}{4}$ " deep and very flat.

He then measured in about  $\frac{7}{8}$ " from the faceplate (top) to allow for the  $\frac{3}{8}$ " rim thickness and  $\frac{1}{2}$ " recess under the lip. Below this mark, he began shaping the outside surface of the bowl with a gouge. A bottom with a rounder



curve (as opposed to straight sides) gives more dip to the curved inside portions of the top edge. The outside shape was cleaned up by shear scraping with a flat scraper.

The lip was then under cut, first using a small gouge, and then with his special scraping tool with a negative rake angle. Josh makes these special tools as required. If he wants an undercut with a different radius, he will grind a new tool.

After the break, Josh reversed the blank onto the scroll chuck. He bored a hole into the top center with a gouge to establish the internal depth. Josh uses a snug fitting O-ring over the shank of the

gouge and uses this as a depth gauge when boring the central hole.

He then hogs out the waste from the center with a  $\frac{1}{2}$ " gouge. As he approaches final thickness, he stops the lathe frequently to measure wall thickness with a pair of calipers. The four corners prevent him from feeling or seeing the wall thickness while turning.

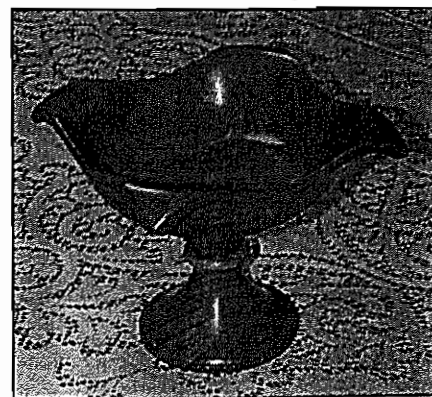
With the interior shaped, Josh begins removing wood from the inside edge of the rim until it breaks through at the sides. From here, the turning gets very tricky and delicate.

He gently removes wood from the top of the lip and inside surface until he gets a uniform wall thickness. This becomes very difficult at the outside edge since most of the time he is cutting in mid air. I suppose it was because

of the intense concentration that Josh unwittingly let slip one of his most cherished trade secrets as he gently sliced off tiny fragments from the lip. In trying to explain how he dealt with this difficult operation, he said "softly , softly, catchee monkey". I know that every turner will burn this immortal phrase into their memory.

The top and inside edge where then finished with a scraper. At this point Josh ran out of time. He would normally complete the piece by blending the four sharp corners into the bowl with a belt sander, and glue the bowl onto a pedestal made from the same wood. The completed piece is shown below.

Thanks Josh. The demonstration was very educational and as usual entertaining.



## STEPHAN HOGBIN

The Guild had originally scheduled Roly Anderson of the CWA as the quest demonstrator for the February 19 meeting. However, because of unforeseen commitments in February, Roly has had to back out of the demo. Brian Graham, through contacts at the CWA and some very fast scrambling, has managed to arrange for Stephan Hogbin to demonstrate at the February meeting.

Stephan Hogbin, of Warton Ontario is a Canadian woodturner and artist with an international reputation for the quality and unique character of his work. His studio overlooks Lake Charles northwest of Owen Sound where he works on a number of private and commercial commissions of all scales using a variety of materials.

Stephan will be showing slides and turning to discuss design concepts. This should be an interesting night, so be sure to be there.

If you wish to get more information on Stephan Hogbin, check out the web site [www.makersgallery.com/hogbin](http://www.makersgallery.com/hogbin)

## ANNUAL GENERAL MEETING

The Annual General Meeting would normally be held in January, but because of the move to Tansley Woods, it was delayed.

It will now be held on February 19 at the next regular meeting. The agenda will include

- approval of last years Annual Meeting minutes
- Treasurers report
- any new business brought forward by the membership.

Since there will not be elections until the January 1999 Annual Meeting (two year terms), the business will likely be very short and we will be able to get on to the fun part of the evening .. turning.

## CASUAL MEETING

Please note that the February casual night will be held on a Wednesday this month, that is **Wednesday February 11.**

## GHWG LIBRARY

Kevin is still missing two videos from the Library, namely Richard Raffan and Dale Stubbs. He is also missing the book on multicenter turning and a number of magazines. Please get these back to him so other members can enjoy them.

The guild is planning on purchasing about 6 videos and 4 textbooks this year. If you have seen any recently that you found to be worth getting, please see Kevin and give him your recommendations.

In addition, Al McBurney will be editing the recordings he makes at the meetings and making these available for loan from the library for those who missed the meetings.

## MEMBERSHIP RENEWALS

Cliff Rose reported that we have 61 members already renewed for 1998.

If you wish to renew, please send your \$40 cheque to Cliff Rose, 33 Golden Orchard Drive, Hamilton. L9C 6J2 or call him at 905-388-6164

## HAMILTON WOOD SHOW

The GHWG will be demonstrating at the Hamilton Wood Show on Jan. 30, 31 and Feb. 1. The show will be held at the Canadian Warplane Heritage Museum at the Hamilton Airport. The Guild will have ample space to set up two large lathes, 2 or 3 minilathes and a display table to

show off turned items made by members.

At the last meeting, I passed around a sign up sheet for those who were able to help with the display and about 10 members signed up, as well most of the executive will be helping out. We still need a few more members who can demonstrate turning or greet visitors, especially for the Saturday sessions. We also need objects for display. The show staff will provide after hours security so the items will be safe. If you can help out with either turning, greeting visitors or have items you wish to display please call me at (905) 335-5391.

The show organizers had problems with people trying to get in free last year by claiming to be Guild members, so this year they will only admit members who have already signed up on the schedule. Anyone else will have to pay the normal admission.

If you are coming to the show as a guest, please drop around the booth and say hi. See you there.

## SETUP CREW

Jim Campbell still needs people who can help set up for Casual and/or meeting nights. It takes a lot of work to get all the equipment set up and taken down for every meeting. The more people Jim has helping, the sooner we are set up and can start the meeting. The need seems most critical at the end of the evening when all the equipment needs to be put away and the area cleaned up.

Jim needs people he can count on to be there by 6:30 on a meeting night to assemble all the equipment. As well he needs others to remain until about 11:00 to put all the equipment away.

Please contact Jim at (905) 824-4435 and offer your help. Remember he can't do it alone.

## SPRING DEMONSTRATIONS

The Spring Demonstrations originally planned for April 25 have been cancelled because of lack of interest.

Al McBurney

## SORBY TOOLS

We have been able to finalize the details for the demonstration by Sorby Tools of England.

The event will be on Wednesday March 25 at the Mainway Arena from 7 to 10:30pm. Note that we were not able to set it up for the 19th, our regular meeting night, so we will have a special members night instead.

The Sorby evening will be advertised to all the area woodturning clubs and Sorby has even placed it on the Internet. Because we cannot predict the size of the turnout, we have booked the Mainway Arena auditorium which has lots of space. There will be no entrance fee for the demo, so we expect a large turnout.

The evening will have turning demonstrations by Sorby to show their lathe and many of their newest tools. Busy Bee will have a full inventory of the Sorby line of Woodturning Tools, additional turning tools from other manufacturers and some woodworking tools. Sorby will also have an open house at Busy Bee on the Friday and Saturday following the demonstration, and will then sell off the lathe at a reduced price.

Special thanks go to Eugene Schlaak and Vince Redmayne for making initial inquiries with Sorby and Josh for pulling everything together since then.

So remember, that's Wednesday, March 25th at the Mainway Arena Auditorium from 7pm to 10:30pm. The parking and admission are free. Mainway arena is at the corner of Walkers Line and Mainway, that's North of the QEW and South of Hwy#5.

## DURHAM WOOD SHOW

The Durham Wood show to be held in Durham, Ontario during

August 7-9 will once again be having woodworking competitions. The categories are

1. Furniture – Hall entry Tables
2. Carving – Birds of Prey
3. Turning
4. Marquetry
5. Youth – open 21 yrs & under

Entry deadline is June 1.

If you wish to enter we will have a few competition application forms at the front desk at the next meeting or you can call the show office at 519-369-6902

## WOOD RAFFLE

The wood raffle raised \$ 170. Amazing considering that only 35 members were present. It might be because Doug Newlove brought in a table full of great wood and everyone wanted to get some.

The finished item was a Walnut Platter made by Ken Agg and was won by me, Frank Ditomaso, so I guess I better get busy. Why is it, my wife gets to keep the platter but I'm the one that gets to make something for next month?

### FOR SALE DELTA UNISAW

10" Tilting Arbour, 3 HP 220 VOLT  
Excalibar Fence  
& 52" Right Extension Table  
\$ 1600  
Call Mel Hordyk 905-335-8066

### FOR SALE BANDSAW

10" Direct Drive Craftsman Bandsaw  
Good condition  
\$75  
Call Brian Graham 905-339-3872

### FOR SALE --POWER TOOLS

Craftsman Saber Saw  
Skil Saber Saw  
Make an offer  
Call Norm Kemp (905) 844-2650

### WANTED DELTA FACEPLATES

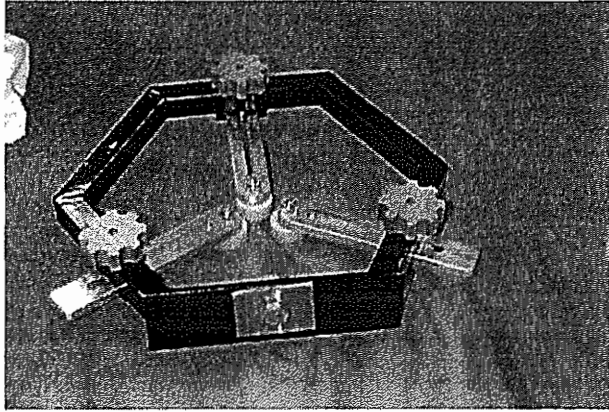
- looking for various size faceplates  
to fit standard Delta lathe, 1"-8tpi  
contact Andy Ditomaso (905) 318-7916

### FOR SALE LATHE

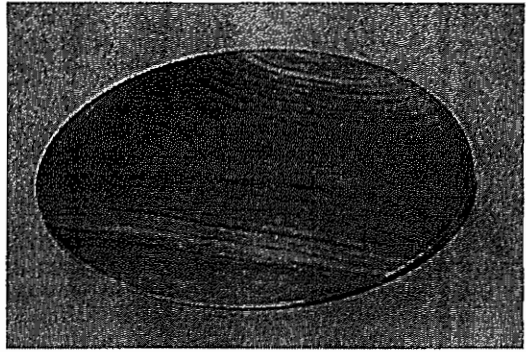
Record Coronet  
1/2 H.P. motor, 3 speed,  
12" diameter x 36" length capacity  
#1 Morse Taper Spur center, 2 rests  
With wooden stand - \$650.00  
Contact Fred Napoli  
(905) 628-5323 (This number only please)

SHOW AND TELL

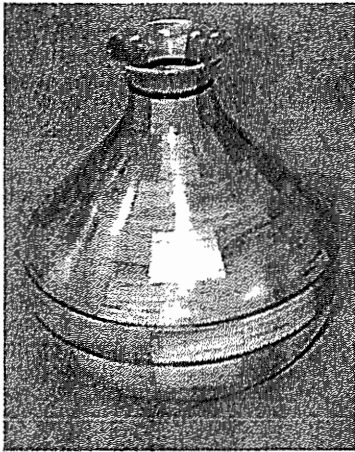
Doug Newlove's Steady Rest which he fabricated from 1" Square tubing and turned Nylon wheels



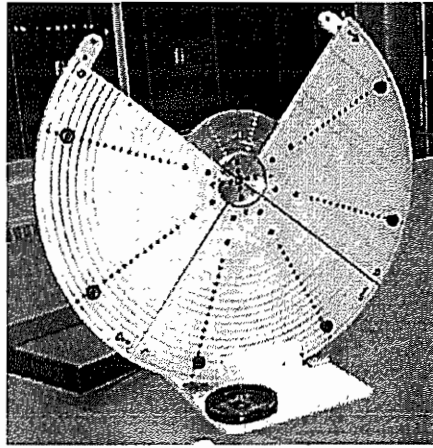
Ken Agg's Walnut platter which was this month's raffle prize.



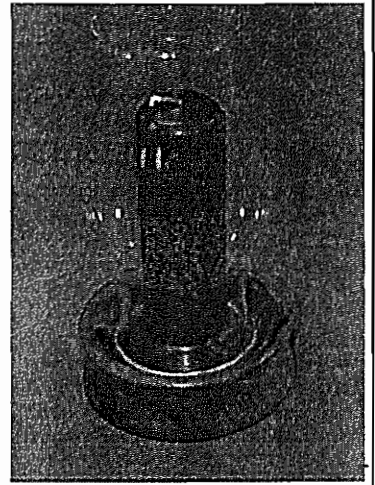
Malcom Cumming's Stack Laminated Vase of Elm, Dyed Maple, Padauk, Walnut and more.



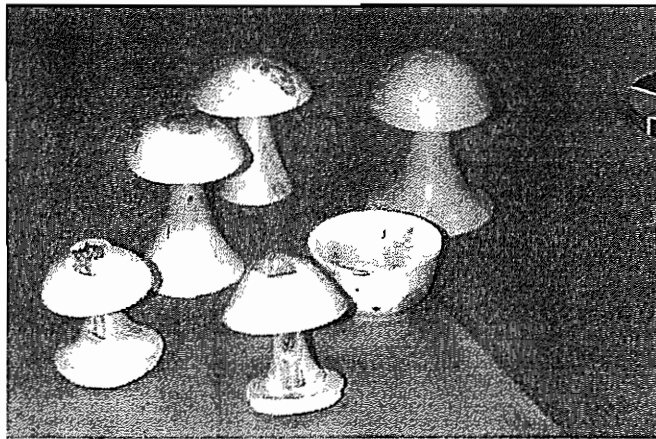
Josh Pichanick's Moby Dick Jaws of Marine Plywood fitted to Nova chuck and Jumbo Jaws, 29 1/2" diameter



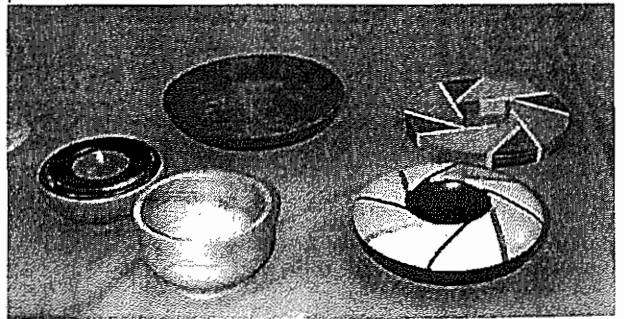
Jim Wright's Hurricane lamp



Cliff Rose's collection of Mushrooms



Cliff Rose's Bowl with segmented top and pakkawood bowls



## TURNING DEMONSTRATIONS AND SEMINARS AT THE GHWG in 1998

<b>FEBRUARY 19</b>	Stephen Hogbin of Warton, Ontario Design concepts
<b>MARCH 19</b>	Member's night A number of Guild members will give turning demonstrations on a variety of subjects. Specific details will be forthcoming.
<b>MARCH 25</b>	Sorby Tools and Busy Bee Tools Sorby lathe and new tool demonstration and tool sale Mainway Arena Auditorium, Walkers Line and Mainway, Burlington 7pm to 10:30 pm, Free admission and free parking, all welcome
<b>APRIL 16</b>	KEN GOLDSPINK of the GBWG and a surprise turner (in other words, we don't know who yet)
<b>MAY 21</b>	VICTOR BURVILLE of the GHWG Stacked Laminated Bowl
<b>JUNE 18</b>	MARK SALUSBURY of the CWA Split Turning and Offset Turning
<b>LATE SPRING</b>	Wood and equipment sale by our advertisers, To be held on one of our casual night at Tansley Woods, Details will be available soon.
<b>EARLY FALL</b>	Members Swap meet/ garage sale, details available soon.

### NEWSLETTER SUBMISSIONS

If you have any articles, ideas, items (wood, tools, etc.) for sale, articles wanted, etc., please contact me and I will add it to the next newsletter. Please try to get this to me by the end of the month.

Frank Ditomaso, Editor  
905-335-5391 (Evening)  
905-548-7014 (Weekdays)

New/Used Woodworking Equipment  
**General/Delta/OneWay**  
**Woodworking Equipment**  
New/Used Woodworking Equipment  
for the serious Woodworker  
**Ashman Technical Ltd.**

351 Nash Rd. N  
Hamilton, Ont. L8H 7P4  
Phone (905) 560-2400  
Fax (905) 560-2404

## EXOTIC WOODS INC.

Serving Woodworkers with Quality Lumber and  
Supplies since 1978

- NEW Pakkawood, great colour  
(30% less than Diamondwood)
- Turning Blanks, Squares & Burls
- Turning Tools, Pen & Pencil Parts
- Deft, Waterlox & Clapman's Finish
- Cyano & West System Epoxy
- Diamond Wood and Colour Wood
- Aniline & Alcohol wood dye

### New Arrivals

- Maple Burl Caps -natural edges
- Figured Maple Bowl Blanks 2"-5"
- Myrtle Burls
- Burl caps for natural edges
- 5% discount for CWA Members
- \$100 or more reg. priced stock, no GST

**2483 Industrial Street**  
**Burlington, Ontario L7P 1A6**  
**Tel: (905) 335-8066**  
**Fax: (905) 335-7080**

## UPCOMING EVENTS

### HAMILTON WOOD SHOW

Jan 30 (1pm-9pm), Jan 31 (9am-5pm), Feb 1 (9am-5pm), 1998  
 Canadian Warplane Heritage Museum  
 Hamilton International Airport  
 Tel (905) 575-0450  
 THE GHWG WILL HAVE A BOOTH SET UP FOR TURNING  
 DEMONSTRATIONS AND TURNED ITEM DISPLAY  
 Please come and visit us at the booth

### KITCHENER WATERLOO WOOD SHOW March 20, 21, 22

Bingeman Park  
 Kitchener, Ontario

### ROCKTON WOOD SHOW

Wood Show and Carving Competition  
 April 17 (12-5), April 18 (10-5) April 19 (10-5)  
 Rockton, Ontario (519) 647-3899  
 Hwy. #8, between Cambridge & Hamilton  
 The GHWG may be involved with demonstrating at this show,  
 more details will follow soon.

### AAW SYMPOSIUM

12th Annual National AAW Symposium 1998  
 June 12-14, 1998  
 John S. Knight Convention Center  
 Akron, Ohio

# WOODHAVEN

**DOMESTIC WOODS & BURLS**  
 Blanks • Squares • Finishing Supplies

**NOW In Stock!**

2" & 3" Velcro Sanding Disks & Holders

**Curly Big Leaf Maple**  
 Large Squares 5" & 6" thick

**JUST  
ARRIVED!**

Red Elm  
 Spalted Sugar Maple  
 Apple Root Burls

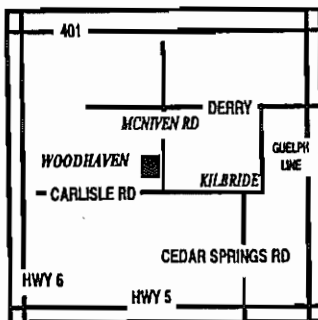
*Arriving Soon*

**Cherry, Elm & Maple Burls**

#### HOURS

Thurs. & Fri. 10 am-5 pm  
 Saturday 10 am - 3 pm

(905) **331-0085**  
**6618 MCNIVEN RD.**  
**KILBRIDE LOP 1G0**



**FOR ALL YOUR WOODWORKING NEEDS  
 SEE THE EXPERTS AT**



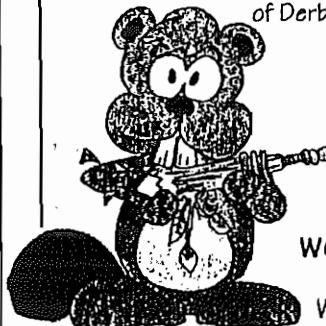
#### WH Group Ltd.

Box 250, 71 Hamilton St. N., Waterdown, Ontario LQR 2H0  
 Waterdown (905) 689-6618 Fax (905) 689-0990  
 Burlington (905) 336-2055 Fax (905) 336-4236  
 Aldershot (905) 639-5270 Fax (905) 639-0499

John Marriage

## WOODTURNING SUPPLIES

All the popular products of Craft Supplies  
 of Derbyshire England are now in Canada.



- Lathe and Carving Tools
- Exotic Woods
- Chucks & Lathe Accessories
- Pen, Pencil, Jewelry Parts

Send for a catalogue today  
 1-800-551-0192

**WOODCHUCKER'S SUPPLIES**  
 1698 WESTON RD.  
 WESTON, ONTARIO, M9N 1V6

## Taking the Stress Out of Life

by Hugh Mill of Lower Hutt

They said that having a hobby would be good for me - relieve the stress they reckoned, take my mind off the demands of my job as secondary school deputy Principal. And woodturning will be good for when you retire - something to do with your hands and even earn a bob or two. Yeah take away the tension and I would live to enjoy a long retirement with much lessened risk of hypertension and / or heart attack.

So I took their advice. Bought a lathe and all the accessories and began to strew the path towards a stress free existence with shavings and dust. Oh happy days - it felt good to feel the creative urge rushing from brain to hands. I'll look younger by the day - maybe my hair will grow back as I get further into the relax mode

But who's kidding who?

How come I'm so stressed out after a day of turning? How come I suffer palpitations and a sore chest when faced with dicey situations on the lathe? You don't know what I'm talking about? You don't believe me?

What about when you are parting off a 50cm Rimu mirror that cost you the best part of \$30 in materials? The light is just starting to show through your cut and you know that just a shaving or two more will do it...but a shaving or two too many will have the frame bashing itself to pieces on the headstock. At that point in time I am about as stressed out as I can get - my arm muscles are all tensed, I'm scared to breathe and my chest muscles begin to hurt. I have to step back, remind myself that I'm meant to be relaxed and take several deep breathes before going in again.

And how many of you have taken your just completed work of art off the lathe to give it its final wipe over with a clean cloth only to score it with a fingernail, or knock it against the tool rest, or drop it, always on something rough, or see for the first time the bad 100 grit sanding mark. Not so bad if the foot is still on your large highly figured platter but if you have just taken it off the extended Cole chuck and its now chuck mark less? I don't know about you but I get pretty tense I can tell you.

Have you ever made pens? I make quite a few and it's the old story the more highly figured the wood the easier it will sell. The skew is on the way back for the final cut, the last three barrels have flown apart, your wife is going Burko because the tea was put out 20 minutes ago and you have still not completed five pens when the schedule demanded twelve. The adrenaline is fair pumping!

Try turning an oblong blank and folding over the corners. The skill is in getting the ends and sides of uniform thickness. Most of the turning here is by sound only because you're working air. My arm muscles almost lock up, my chest begins to hurt and I stop breathing. I don't think that's meant to be good for you. And if you are trying to sand a rough edged bowl that you have been working on for three hours and your knuckles have been severely whacked twice and the congealed blood mixed with dust looks almost obscene thoughts of running slow motion through the tulips are not close by.

What state are you in when the object of your attention, (let's say its curly beech because its good at it), decides to jump off the lathe at 1500rpm and fly past your face, or suddenly hit your visor or whack you in the shoulder and then embed itself in the wall on the other side of the workshop? By the time I've picked it up, re-chucked it and told it what I think of it I'm pretty steamed up. Well apprehensive perhaps. No admit it - I'm fair trembling and as I begin to turn again I have that problem with my arm muscles, I'm gripping the chisel handle so it hurts and I am getting pretty stressed!

I have a bench mounted lathe weighed down by numerous bricks which are not ideal because they do not absorb vibration. I am also keen on turning big burrs and similar sized unround unbalanced objects. Even on the lowest speed of my swivel head 1500 my bench is attempting to prepare for orbit and the cutlery is jiggling and clinking in the dining room sideboard about 30 metres away while I try desperately to hang onto the chisel, my feet leaving the floor below on the odd occasion. When preparing a large piece such as this for the lathe I first prepare the piece using my chainsaw. It's important to understand that I'm scared of chainsaws. I know too many people who can't now write shorthand because the carving tool on their angle-grinder has sliced the tops off their fingers and when bandsaw blades break it gives me such a fright. Suffice to say this part of the turning process is no less exhilarating.

And now I'm into craft shows and all that they entail. The need to have sufficient stock without sufficient time, the need to extend the overdraft to buy the wood and clock parts and pen parts that one must have, the concern when you haven't paid for your stall price after two days trading and the turner down the way is doing a roaring trade, the decision to make mostly platters this time because they sold so well last show only to find that the customers are clamouring for Salad bowls and guess what the other turner has.

They said that I should take up woodturning - to take my mind off the job they said. Relieve the stress! Live longer! Who's kidding who? Where's my Valium? I don't care what the Doctor says, I'm going to do some turning!

**Hugh Mill lives in Lower Hutt and is a member of the Guild of Woodworkers Wellington. He is not usually of such a nervous disposition!**

An article from the National Association of Woodturners of New Zealand  
Their Web page address is <http://www.kiwiwebs.co.nz/artweb/woodturners/>