

Acting President	Treasurer
Brian Graham	Ken McCuaig
2250-20 Rockingham Dr.	2143 Russet Rd
Oakville, Ont.	Mississauga, Ont.
L6H 6J3	L4Y 1C2
905-339-3872	905-277-3029

THE CHIP FLYER

ISSUE: 31

OCTOBER 1998

NEXT MEETING

Hands-on Night - Members only - **Thursday October 8** - 7:00 pm to 10:30 pm
Formal Evening - Members and Guests - **Thursday October 15** - 7:00 pm to 11:00 pm

PLEASE NOTE

**AS OF SEPTEMBER WE WILL BE MOVING TO ROOM 2 AT TANSLEY WOODS
THAT'S ACROSS FROM THE MAIN ENTRANCE ON THE RIGHT HAND SIDE**

MESSAGE FROM THE ACTING PRESIDENT

The first meeting of the fall session was a great start to the return of regular meetings. Doug Magrath was our featured demonstrator showing us how to make threaded lidded boxes. It was also the first night in our new room at Tansley Woods. We had to iron out a few kinks (missing PA system, no TV/VCR and poor seating arrangements) but we assure you these will be corrected by the next meeting. Special thanks to Al McBurney who persevered and finally was able to tape most of the demonstration. As you know, Al is the person who volunteers to tape demonstrations. This enables all members to have a clear view of our guest presenters. Are you also aware that he edits these tapings and has created a library for the Guild? Thanks again Al.

The nominating committee is actively seeking a slate of officers for the 1999 year. To continue the kind of success we have had over the last three years, we need members to volunteer their time.

Your guild needs your help.

Our November 12th casual night will be a completely different format. On this night, we will be holding a garage sale / swap meet. Clean out your workshops. Look for those things that you no longer use but someone else could. (Tools, equipment, wood blanks, glue, finishing supplies, and books - GET THE IDEA). Check the newsletter for further details.

On October 15th, Roland Anderson, from Toronto, alias Scarborough, will be doing a presentation on hollow turning. Roland is active in the Canadian Woodturning Association and serves as Treasurer/Membership Secretary on its executive. We look forward to his presentation.

See you at the next meeting.

NEW MEMBERS

Welcome new members
David Lewis of Grimsby
Gary Cornell of Mount Hope and
Jack McCrodden of Brampton
Total membership is now 105

CASUAL EVENING / HANDS-ON NIGHT

We have changed the name of the "Casual Evening" to "Hands-on Night". This term is more descriptive of what goes on, that is, novice and intermediate turners getting hands-on turning instruction from some of our advanced turners. Please be sure to let Jim Wright know you are coming so he can ensure that we have enough instructors available for you.

HAMILTON WOOD SHOW

The GWHG has once again agreed to take an active role in the Hamilton Wood Show to be held Jan. 29, 30 and 31, 1999 at the Warplane Heritage Museum in Mount Hope.

We will have a booth similar to the one we had last year when we had a tremendous turnout of turners and drew a lot of attention to the Guild. We will be setting up a show coordination committee soon to organize our role.

One idea that had been put forth so far is to limit the lathes to mostly carbatechs and possibly one mid size lathe like a 12" Delta. What do you think of this? Please let members of the exec know as well as any other thoughts you may have on the show.

EXECUTIVE JOB DESCRIPTIONS

Secretary

1. The Secretary records the minutes of the Executive Committee meetings, as well as the Annual Meeting. Basically this involves recording motions made and seconded whether carried or rejected. A summary of discussions is usually included. Copies of the minutes are distributed to each member of the Executive Committee well in advance of the next meeting. Annual Meeting minutes are read to the membership at the next Annual Meeting. The Secretary should have access to at least a typewriter. Word processing and E-mail are useful.
 2. The Secretary conducts correspondence on behalf of the Guild, including notices of changes in the time and place of meetings.
 3. Because the present Secretary has been involved in Constitutions in other organizations, he has assumed responsibility for rewriting parts of the GHWG constitution to clarify certain areas. Members may also submit amendments to the Constitution.
 4. The present Secretary, because of a photographic background, has set up the pictorial record of the Guild's activities, and has been running a video camera and monitor at the regular meetings. Many of the demonstrations have been video-taped and placed in the library.
 5. The Secretary may also be asked to serve on the Nominating Committee.
- Al McBurney

FROM JIM CAMPBELL

I would like to thank the members of the Guild for the flowers sent to me on my recent stay in the hospital workshop. I guess I had a turners disease, the doctors said something about the walls of my bowl/bowels not being the same thickness, I don't know, beats me.
Thanks again
Jim Campbell

CHRISTMAS PARTY

The GHWG Christmas Party will be held on December 10 at Tansley Woods Recreation Center. (Note: this replaces the hands-on night, and the general meeting night will be cancelled.)

This year in order to make the event more social and enjoyable for the spouses (as well as girlfriends, partners, significant others, etc.) we will be having two special events, so far that is.

The first will be a woodturning competition featuring your single "best of" work. The competition will be divided up into three categories, advanced, intermediate and novice turners. Instead of having another woodturner judge the competition (and burning him at the stake later) we are going to ask the spouses to vote by secret ballot in each of the three categories. This should give the judging a different perspective, that of a knowledgeable consumer so to speak. The

competition items will be protected behind a rope barricade (no poking fingers down the innards of vases, or measuring wall thickness, an so on) We are still working on the prizes, more details will follow soon.

Secondly, we will be asking members to make and donate a Christmas ornament to be hung on our tree. Each spouse that attends will be given a free raffle ticket and those that win will get their choice of ornament. We will keep drawing until they're all gone.

We are investigating having the night catered by the cafe at Tansley so the spouses can enjoy themselves instead of working.

More details will follow as soon as they are firmed up. If you have any great ideas contact any of the executive and let us know.

FINISHED ITEM DRAW

The finished item was an Octagonal bowl made by Brian Graham. It was won by Gerry Robins who is now on the hot seat for next month.

2 VIDEOS DONATED

Woodchuckers has kindly donated two video tapes to the GHWG library. One, "Turning for Furniture" by Ernie Conover and another by Dennis White. Look for these in our library. Thanks to John Buccioni of Woodchuckers.

EXECUTIVE ELECTIONS

As everyone likely knows, Len Collins is heading up the Executive Election Nominating Committee attempting to come up with candidates for the eight executive positions. It seems everyone wants to have an executive, but no one wants to be on the committee.

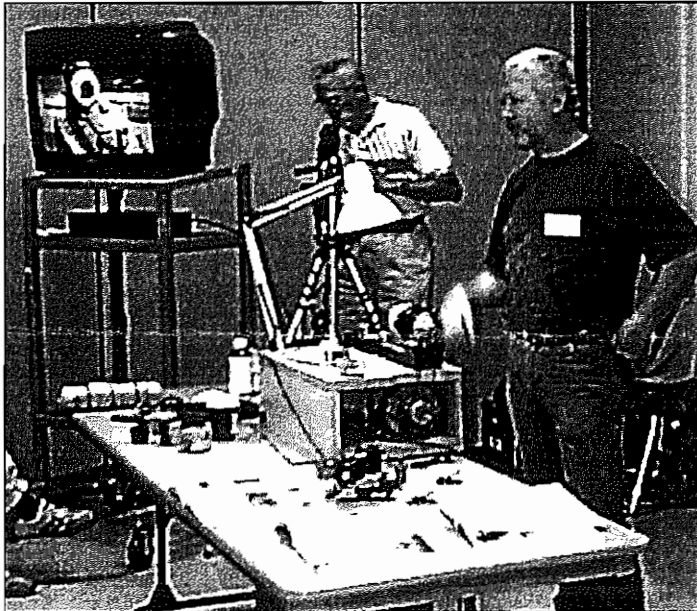
I would like to pass on the thoughts of Tim Schreiner, editor of Fine Woodworking Magazine in his letter in the October 1998 issue. He was reporting on the San Diego Fine Woodworkers Association, a club of 1,400 very active members. In his letter he states "The club is blessed with being in a area with lots of woodworkers, lots of money, lots of retirees, lots of woodworking expertise and good woodworking schools. But its secret has been in keeping everyone active and involved long after other groups would have dissolved under the weight of so many egos. Simply, the group's leaders put woodworking before themselves."

You'd think Tim was talking about the GHWG. As we approach our biannual elections, it is important that all members consider what they can offer the Guild by working on the executive or on one of the committees. The Guild needs to continually replenish it's leadership in order to stay healthy.

Frank Ditomaso

DOUG MAGRATH

Our guest turner to start off the Fall Program was Doug Magrath of London, Ontario. Doug has been turning for about 6 years, and began making a full time living at it about 1 1/2 years ago giving up his CA career. Doug is a member of AAW and recently started a woodturning guild in London.



Most of his work is in large (over 12") utilitarian items such as Salad bowls. Most of the blanks he harvests himself, rough turns while green and kiln dries for about 35 days before finishing. Doug estimates he will sell about 600 pieces this year, using production methods to boost output.

He occasionally does some decorative work with the larger bowls and even a few artistic pieces of spalted or burl wood. Most of the cutoffs and smaller pieces he saves until he has enough to make a production run of small boxes, many with threaded lids, and pens. It is these lidded boxes that Doug demonstrated tonight.

He decided to show two aspects of his work; the first threading the lid and bottom of a small box that had already been rough turned to shape, and the second a double inlay on another box lid that had already been threaded and shaped but with the tenon still on the bottom.

Doug uses a small Klein lathe for boxes that is very similar to the Taig wood and metal micro lathe. He has one additional fixture that he bought from Bonnie Klein that consists of a cross slide and chuck mount that allows him to turn threads. His tools consist of a Bedan, a narrow Parting Tool, a Square End Scraper, a Round Nose Scraper and two Skews, one very small. The Bedan allows him to break out the individual boxes from a long blank and at the same time give him a tenon for mounting in a chuck. He parts off the tops and bottoms with the thin Parting Tool which is 1/20" thick. This leaves enough of the tenon for chucking. The Square

End Scraper has been modified to have an included angle of about 88 deg which allows him to get right into the corners without catching on the other surface. The Skews allow him to get in very close to make relief cuts.

Doug began by mounting the lid blank on the chuck and first made the face of the lid very flat to give a good clean fit when it is screwed onto the bottom. He then cut a shallow recess, enough for about 3-5 threads. Since he was using a thread cutter that made 16 threads per inch, this recess was about 5/16" deep. The walls of the recess were then fine tuned to ensure that were exactly square to the face. This is important for the threads to be cut uniformly and screw on easily. He also added a small beveled recess at the edge of the recess which created a ramp that making it easier to fit the lid over the bottom and engage the threads. He also made a small relief cut at the bottom of the recess to reduce binding. Before cutting the threads, he completed the inside of the lid right through to applying the finish, since this is the only chance he will have had to do it. There are various ways to finish the inside of the lid; single or double curve, chatter work, bead etc. depending on the finish look you want. After the lid was finished, he applied a coating of thin cyanoacrylate (super glue) to the wall of the recess to firm up the wood and make screw cutting cleaner.

Then it was time to cut the threads. The thread cutter consists of a 60 deg dovetail cutter mounted on a Morse Taper that fits into the head stock. This type of cutter is available at most machine shop supply houses or from Woodcraft. The cutter is spinning at the maximum speed the lathe is capable of, somewhere around 3000 rpm.

The lid blank was mounted on a cross slide. This device rotates the lid and at the same time advances it 1/16 of an inch per turn, into the cutter, thus cutting the threads. The lid was first aligned with the cutter (with the lathe off) by manually moving it until the inside wall just touched the tips of the cutter. The mechanism was then pulled away from the cutter, and the microadjuster on the cross slide set to give a depth of cut of about .035". With the lathe on, the lid was slowly advanced (and rotated) into the cutter to cut the threads. The lathe was stopped when the cutter reached close to the bottom of the recess and the mechanism retracted. The lid was then remounted on the headstock and the threads given a light sanding to remove the sharp tips of the threads. This gives a smoother fit on the bottom threads.

The bottom was then mounted on the head stock and a tenon turned about 3/16" long and .035" wider than the opening in the lid. This gives a close fit which seems to give smooth operation. Again the tenon must be dead square and flat. A 1/16" bevel was made on the outside corner and a relief cut at the bottom of the tenon. The bottom was then mounted on the cross slide, the cutter mounted on the headstock. With the lathe off, the cross slide was positioned until the tenon just touched the cutter, then backed off and the depth of cut set to .035". The threads were then cut the same as

FIRST ANNUAL MEMBERS SWAP/GARAGE SALE

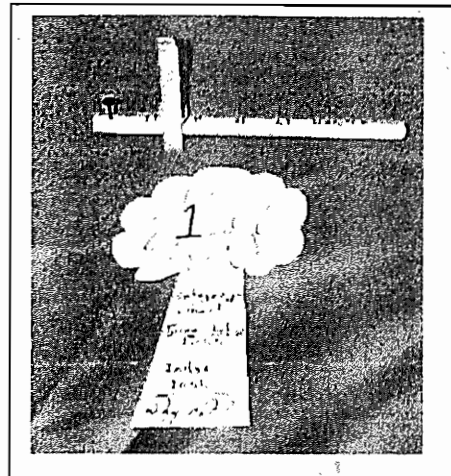
November 12, 1998

Time to clean up the basement to make room for more important STUFF. If you are interested in selling paints, sandpaper, books, power tools, woodworking and lathe tools, wood etc at our first garage sale then contact Mary at 335-8133. Items should be prepriced and of course you will be responsible for your own sales. We'll arrange a table or suitable space for you and can pretty well guarantee you will come home with as much as you bring. But it'll be better stuff! Let me know if you want some space **asap**.

Mary Muir

AND NOW FOR SOMETHING COMPLETELY DIFFERENT

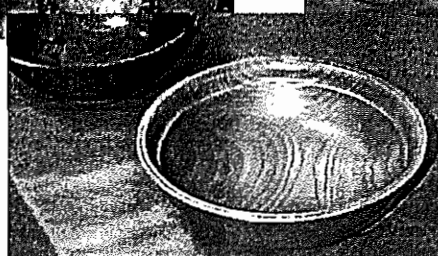
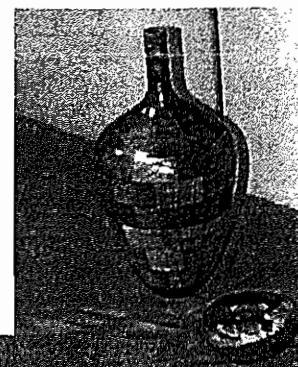
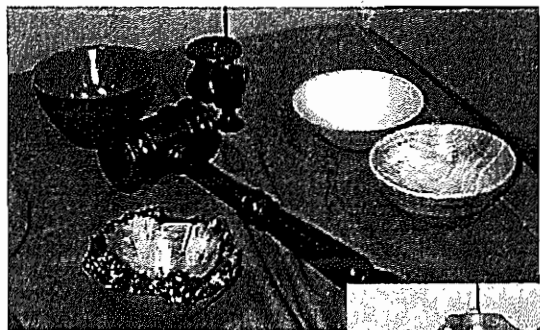
Josh Pichanick, who has never been known to miss an opportunity to poke a little fun at unwilling victims, was so inspired by the first prize selection at the Durham Wood Show that he decided to make his own entry. Possibly he'll enter it next year.



FALL PROGRAM AT THE GHWG

- | | |
|--------------------|---|
| OCTOBER 15 | Roland Anderson, treasurer and membership secretary of the CWA
Hollow Turning |
| NOVEMBER 12 | Members Swap meet/Garage sale |
| NOVEMBER 19 | Paul Ross of Chalet Woodcraft
Turning demonstration and Woodchuckers sales table |
| DECEMBER 10 | GHWG Christmas Party |

MEMBERS GALLERY



before. Care must be taken to keep the cutter from unscrewing the chuck since, with this operation, the forces would normally try to unwind the chuck. After cutting the threads and before removing the bottom from the cross slide, Doug checked the fit with the lid. It is possible, with careful alignment, to recut the threads if they don't engage smoothly.

The bottom was then remounted on the headstock and the lid screwed on to check for grain match. By removing material from the shoulder of the bottom, the match between bottom and lid can be fine tuned until the grain lines up when the lid is fully closed. Actually, Doug left the lid to bottom match about 1/4" short and would normally wait about a week for the box to settle before making the final fit. He does this by lightly running the shoulder of the lid over a piece of 600 grit sandpaper, removing a minute amount of material at a time until he gets a perfect fit.

Once the lid to bottom alignment is within 1/4", the box outside shaping and finishing can be completed. The lid is left screwed onto the bottom and both pieces are finished together. Doug typically uses Lee Valley Turners Friction Polish for his boxes. When he wants to add extra sparkle to a dull wood, he uses a buffing wheel and polishing compound. He generally completes a box in about one hour. This completed the demonstration of thread cutting and we broke for coffee.

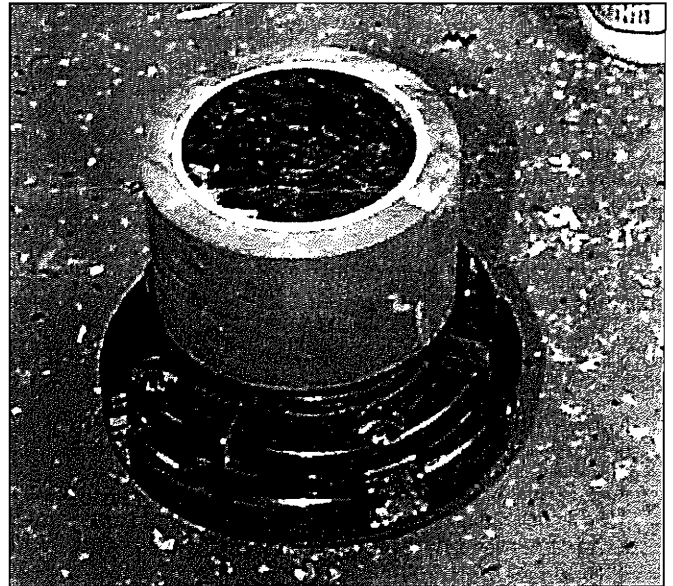
After the coffee break, Doug demonstrated inlaying contrasting wood into the top of the lid. Doug frequently uses inlaying to improve the appearance of the endgrain lids, especially on woods that don't polish up well on endgrain. He had brought in a finished Madrone box that still had the bottom tenon attached and could be rechecked. He had decided to inlay an outer ring of Holly and an inner medallion of Rosewood that still had a bit of sapwood on it. Both of these were glued, best side in, to wood discs screwed to faceplates. The orientation is important here since he wanted the poorer side glued to the lid.

He began by turning a shallow recess, about 1/16" deep, in the top leaving about 1/4" between the outside of the recess and the outside of the lid. The bottom of the recess was shaped with the same convex curve as the lid so that the finished lid would have uniform thickness. The sides of the recess had a very slight taper, maybe 1 deg. so it was smaller at the bottom. This would give a plug fit that was much easier to match than a straight sided or undercut recess.

He then mounted the Holly on the headstock and carefully reduced the diameter until he got a very tight fit into the recess in the lid. He also put the same curve on the surface of the Holly so that it would sit into the recess tightly. He then parted the Holly off the faceplate with his thin Parting Tool.

He glued the inlay into the lid using a medium viscosity cyanoacrylate (super glue), running a small bead around the bottom of the recess. He doesn't use glue in the middle because that part would be removed anyway. He sprayed accelerator on the Holly and pressed the inlay into the recess. In about 30 seconds he was able to continue turning the lid.

The lid was again mounted on the headstock and another recess turned inside the perimeter of the Holly for the Rosewood inlay. The procedure was the same except more care was used to ensure the gluing surface of the Rosewood was a good match with the convex shape of the lid since the whole Rosewood inlay would need to be glued this time. After gluing the Rosewood inlay in place, the lid was returned to the headstock and the lid given its final shaping. There are any number of ways to complete the lid from a smooth surface across the three types of wood to steps at the edge of each type to whatever your imagination can work out. Once smoothed the lid was finished again and the piece complete as shown below.



Doug recommends any fine grain wood for small boxes, his favorite being Cocobolo, African Blackwood, and Maple. He recommended three books that give good techniques or ideas for small boxes, they are

Turning Boxes by Richard Raffan

Bert Marsh (title unknown)

Source book of shapes by John Hunnax

While he is opposed to people simply copying the designs from the books, he feels they can provide good concepts to develop your own ideas and come up with your own unique shapes.

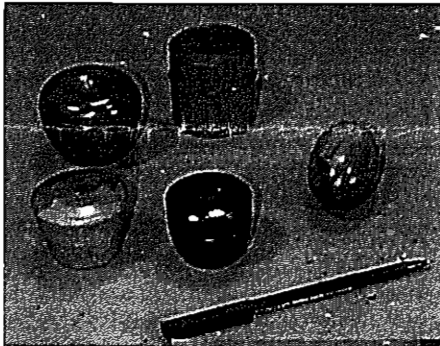
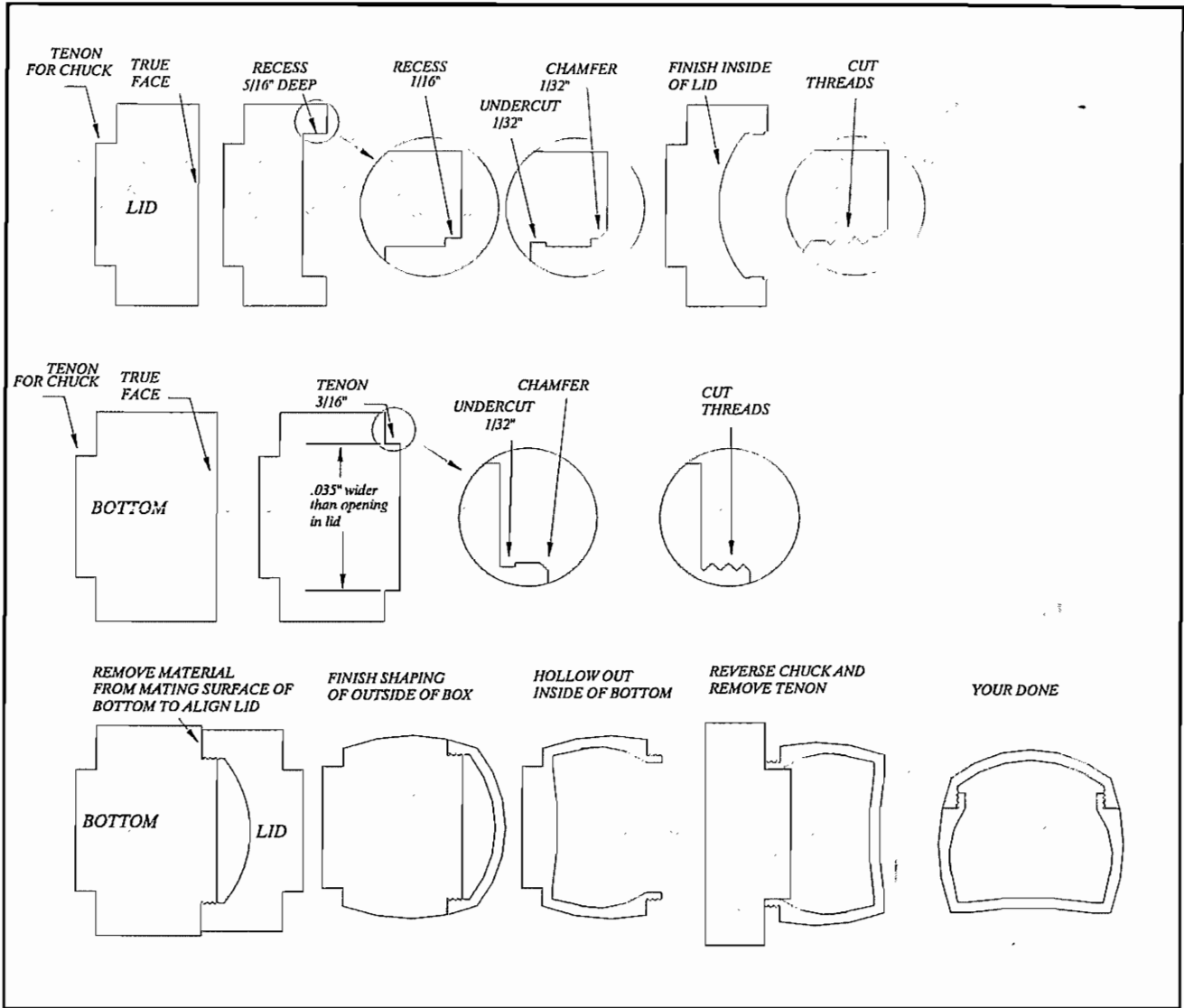
When Doug was finished he graciously donated a beautiful spalted maple box with a threaded lid to the raffle. It was won by yours truly and quickly annexed by my wife when I got home.

Doug also invited any members of the Guild to visit the London Woodturners Guild whenever we are in the area.

Thanks Doug for a very interesting demonstration. The possibilities in the field of box design are endless and you have given us an excellent introduction and much inspiration.

Frank Ditomaso

STEPS IN MAKING A THREADED LID BOX



Some work by
Doug Magrath

And just to prove
they really are
boxes



EVENTS

Woodstock Wood Show

October 2, 3, 4
 Friday 10-9
 Saturday 10-6
 Sunday 10-6
 Admission \$ 10.00
 3 day pass \$25.00
 Woodstock Fair Grounds
 519-539-7772

Matthew Calder

of Devon, England

at the Grey Bruce Woodturners Guild

Saturday October 3, 1998
 8:30 - 4:00 PM (1 hour break for lunch)
 Hollow turnings with external carving using the
 Arbortech System, staining and dyeing.
 Welbeck Sawmill
 \$30.00

If you wish, bring some of your latest turnings
 for a photo display that Matthew will be submitting
 for publication in "Woodturning" magazine.
 Contact Ken Goldspink 519 396 3787

Robert Rosand

from Bloomsburg PA

at the Western N.Y. Woodturners Guild

Wed. October 28,, 1998
 6:00 - 10:00 PM
 Hamburg Junior High Auditorium
 NYS Thruway,
 Take Hamburg Exit
 Take RTE. 73 South 1 1/2 miles
 \$ 5 US through Brian McIntosh 905-227 2408
 or some tickets may be available at door

Brantford Wood Show and Crafts

November 6, 7, 8, '98
 Friday 11-9, Saturday 10-6, Sunday 10-5
 Brantford Civic Centre
 Admission \$6 Seniors \$ 5 Free Parking
 Weekend Pass \$10
 905-575-0450
www.canadianwoodworking.com/brantford

One of a Kind

Christmas Canadian Craft Show & Sale

Thursday November 26 - Sunday December 6
 Weekdays 11am - 10pm
 Saturdays 10am - 10pm
 Sundays 10am - 7pm
 National Trade Center, Exhibition Place, Toronto
 Admission Adults \$9.00, Seniors & Youth \$ 6.50
www.oneofakindshow.com

FOR ALL YOUR WOODWORKING NEEDS
 SEE THE EXPERTS AT



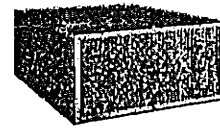
WH Group Ltd.

Box 250, 71 Hamilton St. N., Waterdown, Ontario L0R 2H0
 Waterdown (905) 689-6618 Fax (905) 689-0990
 Burlington (905) 336-2055 Fax (905) 336-4236
 Aldershot (905) 639-5270 Fax (905) 639-0499

John Marriage

Spring Specials

Air Cleaning System



\$265

Model B2055



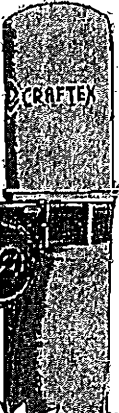
This unit has a capacity
 of 510 CFM and is
 suitable for a room as
 big as 4000 cu.ft. It has
 1/4 HP low noise motor.

Dust Collector

1 HP

\$265

Model B1140



Motor
 1 HP,
 110V
 Single
 Phase,
 590 CFM

FREE!

Over \$30.00 worth
 of accessories
 with purchase.

Dust Pick Up & Stand



\$65

Model B1681
 Reg. \$85.00

- *11" x 2" cast aluminum
 pick up for 4" hose
- *Adjustable height:
 30" - 50"

Busy Bee Tools

Toronto Location

355 Norfinch Drive
 North York, Ont. M3N 1Y7
 TEL: (416) 665-8008
 FAX: (416) 665-8337

London Location

1809 Oxford St. East #29-31
 London, Ont. N5V 2Z7
 TEL: (519) 659-9868
 FAX: (519) 659-0771

Visit Our
 Showroom
 For Hundreds
 Of Other
 Specials!

Prices subject
 to change
 without notice

THE Right TOOLS. THE Right PEOPLE. THE Right PRICE.

New/Used Woodworking Equipment

General/Delta/OneWay Woodworking Equipment

New/Used Woodworking Equipment
 for the serious Woodworker

Ashman Technical Ltd.

351 Nash Rd. N
 Hamilton, Ont. L8H 7P4
 Phone (905) 560-2400
 Fax (905) 560-2404

WANTED TO PURCHASE

WOOD

Privately from anyone who presently finds and saws his own wood.
Preferably English Walnut, Maple, Beech, Birch, Elm, etc.
Half logs from 25" dia. to 13", 3-4" longer in length than width and split to remove pith.
Call Josh Pichanick 905 335 3275

FOR SALE

Sears Router Crafter
for turning spirals
Router not included
\$ 20.00
Call Charles 905 385 7818

FOR SALE

Union Graduate Bowl lathe
with 5' bed
\$3500
Michael Hartman (Woodworker's Haven)
519 884 5401

FOR SALE

Edge Sander
6" x 42" Belt, 1 HP motor, 3 extra belts
\$ 300.00
Call Doug Newlove
416 622-3248

FOR SALE

Radial Arm Saw
Black and Decker 10"
wired for 220
Planer Moulding guard, stand and extras
\$ 550 00 or best offer
Call John at 905 389 2645

FOR SALE

Craftsman Vacuum System
Comes complete with Gates, Pipes, etc.
\$ 50.00

Call Joe Golfi 905-765-1863 (Home)
905-523-4103 (Bus.)

NEWSLETTER SUBMISSIONS

If you have any articles, ideas, items (wood, tools, etc.) for sale, articles wanted, etc., please contact me and I will add it to the next newsletter. Please try to get this to me by the end of the month.

Frank Ditomaso, Editor
905-335-5391 (Evening)
905-548-7014 (Weekdays)

EXOTIC WOODS INC.

Serving Woodworkers with Quality Lumber and
Supplies since 1978

NEW SHIPMENT / ARRIVING

20% off all existing stock of
Figured Maple Bowl Blanks

JUST ARRIVED

2 -21/2" Quilted Maple
2 -21/2" Maple Burl Slabs

Good supplies of Waterlox

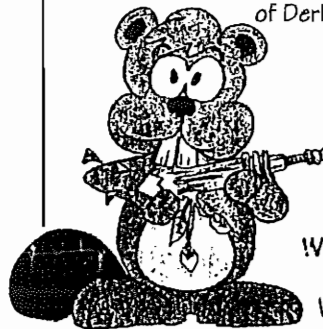
Come and pay us a visit
8:00 to 5:00 weekdays
8:00 to 12:00 Saturday

- 5% discount for CWA Members
- \$100 or more reg. priced stock, no GST

2483 Industrial Street
Burlington, Ontario L7P 1A6
Tel: (905) 335-8066
Fax: (905) 335-7080

WOODTURNING SUPPLIES

All the popular products of Craft Supplies
of Derbyshire England are now in Canada.



- Lathe and Carving Tools
- Exotic Woods
- Chucks & Lathe Accessories
- Pen, Pencil, Jewelry Parts

Send for a catalogue today
1-800-551-0192

WOODCHUCKER'S SUPPLIES
1698 WESTON RD.
WESTON, ONTARIO, M9N 1V6

WOODHAVEN

DOMESTIC WOODS & BURLS

- Turning Blanks & Squares
- Waterlox & Carnauba Wax
- Velcro Sanding Disks & Holders
- Buffing Supplies

HOURS

Thurs. & Fri. 10 am - 5 pm
Saturday 10 am - 3 pm

(905) 331-0085
6618 MCNIVEN RD.
KILBRIDE LOP 1G0