

Acting President

Brian Graham

2250-20 Rockingham Dr.

Oakville, Ont.

L6H 6J3

905-339-3872

Treasurer

Ken McCuaig

2143 Russet Rd

Mississauga, Ont.

L4Y 1C2

905-277-3029

THE CHIP FLYER

ISSUE: 33

DECEMBER 1998

NEXT MEETING
CHRISTMAS PARTY - Thursday, December 10 7:00 pm

MESSAGE FROM THE ACTING PRESIDENT

The November meeting was extremely well attended. Seventy-seven members came out to see the presentations from Woodchuckers. Many took advantage of the discounted prices on various items from their catalogue.

Our next meeting which will be held one week early, Thursday, December 10th, will be our Christmas party. Remember to bring your Christmas ornament for the tree so that every spouse will receive one from the draw. I am looking forward to all members participating in the competition which will allow for novice, intermediate and advanced turners. Prizes in each category will range from \$50.00 gift certificates to woodturning videos & books. Cafe in the Woods will be catering the event. Light refreshments will be served. Hoping to see you there.

At this time I would like to wish you and your families Season's Greetings and good woodturning.
Brian Graham

ANNUAL MEETING AND ELECTIONS

The Annual Meeting of the GHWG will be held on Thursday, January 21, 1999, at 7:00 pm at Tansley Woods Center. The 1999 Annual Meeting will be a very important meeting for two main reasons.

1. Proposed amendments to our Constitution and By-Laws must be voted on by the membership. The proposed changes have been approved by the Executive Committee. Copies of them were distributed at the October and November regular meetings for your consideration.

2. Elections will be held to choose a new Executive for your Guild in 1999.

Our present Constitution requires a minimum of 60% (that is 62 voting members) of our membership to pass motions and to elect new Executive members. We urge all members take part in the Annual Meeting. Vote on the amendments, and elect an Executive to lead you for the next year. Without a quorum for these votes on January 22, the Guild will be left without an Executive to lead it, and would therefore be headed for dissolution. The GHWG needs your support and participation.

Copies of the present Constitution and the proposed amendments to it may be obtained from Al McBurney at the December 10 regular meeting.

With a quorum present, the business of the Annual Meeting should be completed in one half-hour, leaving plenty of time for an excellent demonstration and our regular meeting activities.

See you there
Al McBurney

WELCOME NEW MEMBERS

Welcome to our newest members

Dave McKee of Burlington
Glen Mott of Burlington and
George Daer of Brantford

That brings the membership to 108 members.

To all new members - please be sure to attend our Christmas party. It's a great chance to meet fellow turners without the time limitations of a regular meeting. There is nothing woodturners love better than talking woodturning and passing on their hard earned knowledge to new turners. You don't need an item for the competition or an ornament, just come and enjoy. It will be an opportunity to see some of the fabulous talent in the Guild. Hope to see you there.



THE GHWG 1998 CHRISTMAS PARTY

THURSDAY DECEMBER 10, 1998

TANSLEY WOODS RECREATION CENTER



FOOD AND DRINK

Hot finger foods and drink catered by Tansley Woods Cafe and cold food trays arranged by Mary Muir.

Ladies, you will not need to do anything except come and enjoy yourselves.



CHRISTMAS ORNAMENT RAFFLE

All spouses who attend will receive a free raffle ticket for one of the Christmas ornaments turned and donated by members.

WOODTURNING COMPETITION

Bring in your **single** best piece.

Judging to be done by spouses by secret ballot. All pieces will be behind a rope barricade and not handled by anyone.

Prizes will be awarded in three categories, Novice, Intermediate and Advanced.

Novice

-Turning for less than one year.

Intermediate

- Still learning
- not previously won a woodturning competition.

Advanced

- Previously won a woodturning competition
- or making a living at turning
- or just darn good at it

PRIZES

1st Place

\$ 50 gift certificates from Weeks, Woodchuckers and Woodhaven

2nd Place

Woodturning Videos

3rd Place

Woodturning Books

Door Prizes

more gift certificates and books



John Salvatori and John Buccioni of Woodchuckers

As Brian referred to them, "the two Johns", that is John Salvatori and John Buccioni from Woodchuckers were our guests at the last meeting on November 19. While John Salvatori demonstrated a number of tools, John Buccioni and Mrs. Salvatori handled a well stocked sales table.

John demonstrated the Kel McNaughton Bowl Saver Jig and the Woodcut Jig and talked about the various strengths and weakness of each system. He also discussed the McNaughton "Hollower" and the Exocet Hollow turning tools.

Kel McNaughton Jig

The Kel McNaughton Jig is designed to remove one or more blanks from the center of a large blank, allowing the turner to make two or more bowls from one large blank of wood instead of a lot of woodchips. The jig consists of an adjustable tool post that mounts in place of your existing tool rest and four different cutters.

The tool post holds the cutters securely at two points while still allowing the turner to move the cutter into the cut. There are three curved cutters and one

straight, each cutter having a mild steel shaft and tool steel tip that can be resharpened.

The smaller set has curved cutters for making cuts with diameters of 4-6", 8" and 10", the larger set covers curves of 12" and 14" range.

To use, John simply lined up the tool post, and with the tool pushed through a slot in the post and under a supporting pivot, began cutting into the blank. He moved the cutter back and forth to slightly widen the kerf, and withdrew it frequently to clear out woodchips before they jammed in the cut. He continued to cut until he was about an inch from cutting right through (he had a mark on the cutting tool). He would then remove the blank with either a hammer blow or by prying it out with a tool in the kerf.

The cutters would normally be sharpened with a diamond hone to restore the edge and build up a small burr. John recommends grinding only as a last resort, since the tip could quickly be ground away.

The McNaughton system seemed very flexible in that the turner wasn't restricted to blanks of just the diameters of the cutters, but could move the tool sideways on either side of the tool post and change the diameter to some extent.

Current pricing for the various systems are approximately \$ 360 for the small set, that is the tool post, 3 curved cutters and 1 straight cutter. The large

set runs about \$ 420 and a combo set for \$600. Handles are separate, with the steel handles with plastic coating running about \$75.

Woodcut

The Woodcut jig does the same job as the McNaughton system, but with less flexibility. It again has a tool post that mounts on the tool rest but does not allow as much sideways travel. The Woodcut jig can make blanks with diameters of 8" or 10" with two different cutters, but can only make round cuts. If a different shape is desired, the round shape would have to be modified after being separated and remounted on the lathe. This would waste a little more wood, but probably not more than the wider kerf required by the McNaughton. The Woodcut also allowed for additional support from the Tailstock which is a nice feature.

The Woodcut cutters had replaceable tips, but there was no allowance for clearance in the cut, so the woodchips may jam up easier. Current pricing is about \$280 for the system.

McNaughton Hollower

John also discussed the McNaughton "Hollower" which is a set of steel hollowing tools with a special "alloy tip". The three tools in each set are about 14" long with a one straight and two cranked at different angles to get into deep vessels. The tools are available with shank diameters of 1/2", 5/8" and 3/4" with current pricing about \$75.00, \$120.00 and \$145.00 respectively.

Exocet

The Exocet is actually a series of Hollow Turning Tools, from a company called Link Technology in New Zealand.

The tools consists of a hollow handle with a cam lock that allows the cutting tools to slide in and out of the

handle body. Handle extensions are also available. The tool itself is either a 1/2" or 3/4" stainless steel rod with a fastening attachment on the end to add adjustable cutting tips. The tip is unique in that it incorporates a chip breaker to reduce jamming. The tip can be adjusted to limit the depth of cut. A cranked tool rod is also available to get around corners.

In all, John presented an impressive set of innovative tools. That combined with some great deals at the sales table made for an enjoyable evening. Thanks to the two "Johns" of Woodchuckers.



GHWG SWAP MEET / GARAGE SALE

The first GHWG Swap Meet /Garage Sale organized by Mary Muir was a great success. We had about 20 "vendors" most of whom refrained from bringing in their "junk" but instead brought in tools for turning and general woodworking, wood blanks, woodworking supplies etc.

We could have used a few more buyers, but now that the word is out, we may get more buyers at the next one which we hope to have in the spring.

THE WOODTURNERS BOND

No, not the glue, but rather that certain something that creates a bond between woodturners.

Prior to my recent trip to Fort Lauderdale - Florida, I checked the AAW Directory and discovered that the Gold Coast Woodturners Club was right there.

I called the listed spokesman - a Mr. Mitch Wolok, and as soon as I had said I was a woodturner and would shortly be in the area - he stopped me and said to come

on down, bring my tools, do some turning in his shop, etc, etc. I felt like I had found a long lost buddy, what a great reception.

Mitch Wolok has been turning for 25 years, and made it his full time profession 3 years ago. During the past year alone, he has received numerous awards at a number of shows, and his work can be seen at the Boca Raton Museum of Art and the Dallas 500. His pieces are one of a kind and he specializes in tall vases which entail very deep hole boring.

In 1997 Mitch designed and made a specialized woodturning cutting tool - "the Wolok Hook Tool" which even I could master in less than an hour, on his custom made Nichols lathe.

The tool, investment cast M2, being a Tungsten Molybdenum high speed steel, is very effective and simple to use, provided one follows the rules. It is rather like using a skew chisel on the inside of a 24 inch deep vase - impossible of course - and looks like a termite, but it is a hook and not a ring.

The tool can be ordered from Woodcrafters of Oklahoma at 405-632-3100 or Fax 405-632-3626, ask for Gary Voorhies.

Don't quote me, but I think it sells for about \$25 to \$30 U.S. and may include a cone shaped mounted grinding wheel for sharpening.

The tool itself is then fastened into a 3/4" or 1" dia. steel bar, about 36" to 48" long, which the purchaser would have to make for himself. I can provide further details to anyone interested.

I saw Mitch again just before I left, what a send off. He kept putting wood into my car, the trunk, behind both

seats, on the floor in front, and if I had not stopped him, he would have loaded the drivers seat as well.

There are two other clubs in the immediate area and through Mitch I met many of their turners, and received the same open arms reception. If you're ever in the greater Miami area, check the AAW directory or contact Mitch - you will be glad you did. .

Josh Pichanick

Tree Topper

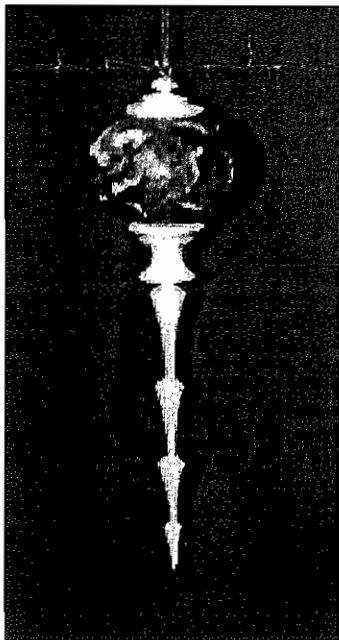
This ornament can be finished to stand on the top of your tree or, with a different finial, it makes a very distinctive hanging bauble for a woodturner's Christmas Tree.

Our thanks to Robert Rosand of Bloomsburg Pennsylvania, for supplying the instructions .

The overall height is about 9" with a diameter of 2 ". Burl is used for the globe and walnut, maple or cherry for the icicle and finial. The globe is hollow turned to about 1/4 " and a "funnel" on the bottom allows it to be fitted to the top of the tree. The finial and the "funnel" are made of two separate pieces of stock 1 " square, one about 6 "long and the other about 2" long. Both pieces are turned to a cylinder prior to being held and turned in a three jaw chuck.

Construction

- 1 Glue stock to be used for the globe portion to a waste block which is fastened to a faceplate that is held by a three jaw chuck.
- 2 Turn the globe, leaving enough material at the base to allow hollowing and final turning.
- 3 Drill a 3/8" hole through the entire globe to mark the top of the ornament and to begin the hollowing procedure.



4 Widen the hole at the base to about 3/4" . (This is also the area of the globe that will receive the funnel.)
 5 Hollow the globe , using a variety of bent-angle and straight-shafted tools.

6 Refine the top of the globe; then sand and part off the lathe.

7 Begin the finial and the funnel by holding the 6 " piece of wood in the three jaw chuck. Turn top segment, sand and finish it before proceeding to the next segment, which is subsequently turned, sanded and finished before proceeding to the next, and so on. Turn four segments in this manner, trying to make each a bit larger and longer than the previous. (This method is used because of the tendency of the wood to warp and move on occasion. Rather than go back and try and sand a finial that is wobbling , finish it immediately. If the wobble is too great, discard the piece and start again.)

8 Turn the bottom section of the finial with a variety of gouges and skewers for a variety of forms.

9 When turning is complete. fit the finial to the 3/8" hole in the globe. Undercut the finial at its base until you have a 3/8" tenon. Part off and glue to the globe.

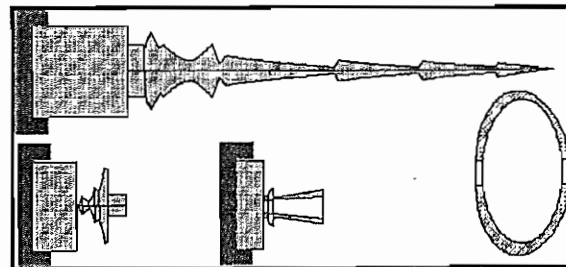
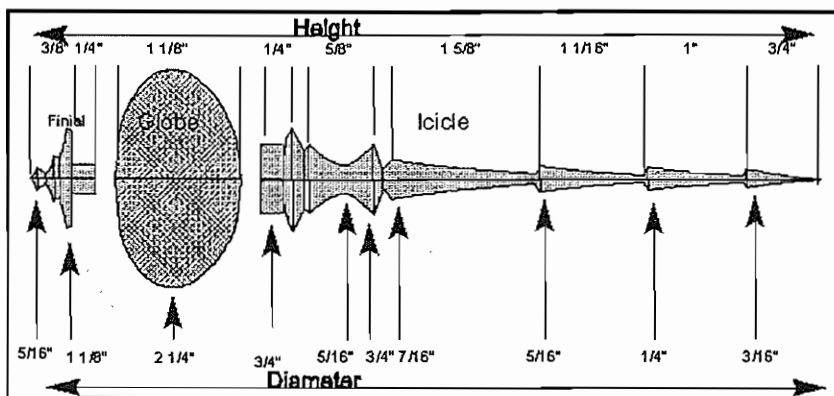
10 Holding the 2" piece of stock for the funnel in the three jaw chuck, drill a 1/2" hole entirely through it.

11 With a small gouge, open the hole a bit to fit on the top of a tree. Turn and refine the outer shape of this funnel.

12 When satisfied with the shape, turn a tenon to fit the 3/4" hole, Making certain to undercut and ensure a tight fit.

13 Glue the funnel in place. Allow to dry and spray the ornament with a semi-gloss lacquer.

Robert Rosand

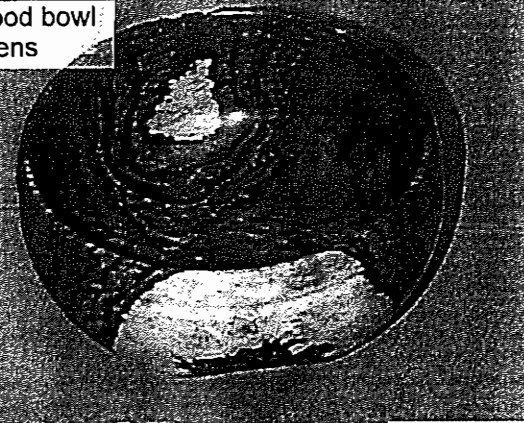


MEMBERS GALLERY

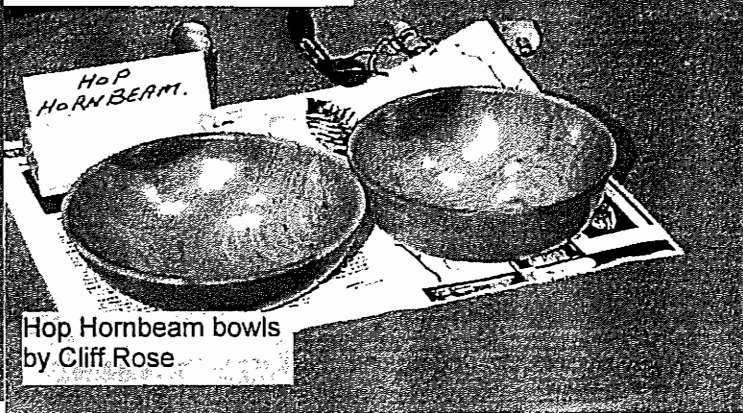
Black Ash bowl by
Cliff Rose



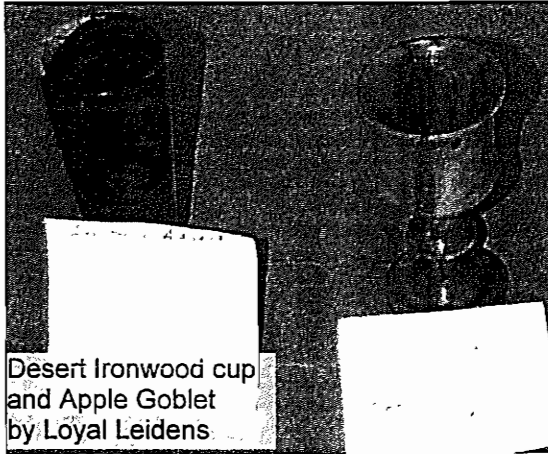
Desert Ironwood bowl
by Loyal Leidens



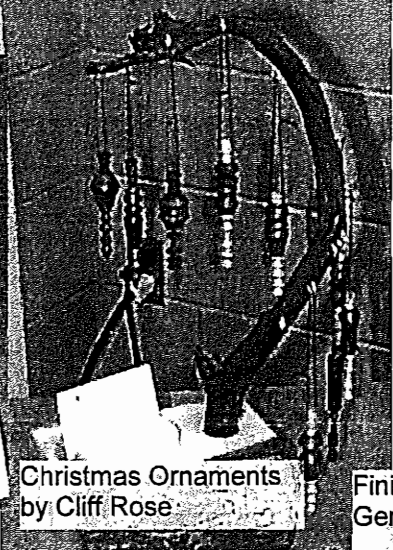
Spalted Maple Bowl by
Jim Fretz



Hop Hornbeam bowls
by Cliff Rose



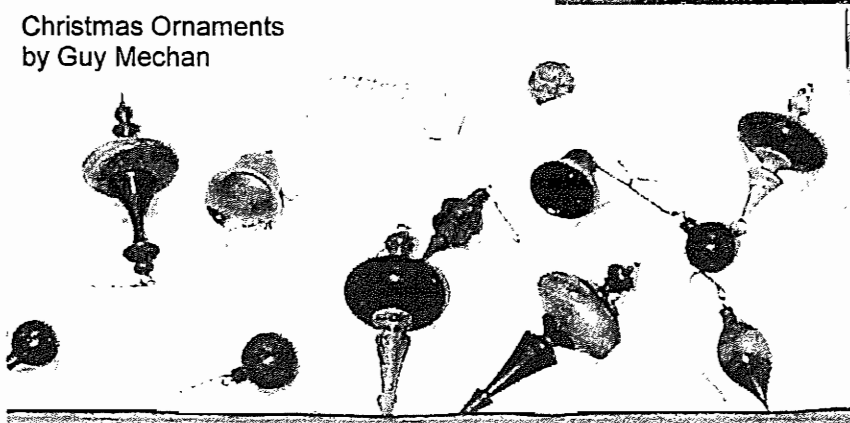
Desert Ironwood cup
and Apple Goblet
by Loyal Leidens



Christmas Ornaments
by Cliff Rose

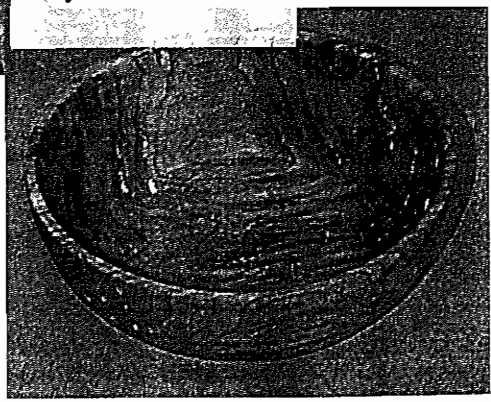


Spalted Maple Burr
Bowl by Jim Fretz



Christmas Ornaments
by Guy Mehan

Finished Item by
Gerry Robins



New/Used Woodworking Equipment
General/Delta/OneWay
Woodworking Equipment
New/Used Woodworking Equipment
for the serious Woodworker

Ashman Technical Ltd.

351 Nash Rd. N
Hamilton, Ont. L8H 7P4
Phone (905) 560-2400
Fax (905) 560-2404

EXOTIC WOODS INC.

Serving Woodworkers with Quality Lumber and
Supplies since 1978

NEW SHIPMENT / ARRIVING

20% off all existing stock of
Figured Maple Bowl Blanks

JUST ARRIVED

2 -21/2" Quilted Maple
2 -21/2" Maple Burl Slabs

Good supplies of Waterlox

Come and pay us a visit
8:00 to 5:00 weekdays
8:00 to 12:00 Saturday

- 5% discount for CWA Members
- \$100 or more reg. priced stock, no GST

2483 Industrial Street
Burlington, Ontario L7P 1A6

Tel: (905) 335-8066

Fax: (905) 335-7080

FOR ALL YOUR WOODWORKING NEEDS
SEE THE EXPERTS AT



WH Group Ltd.

Box 250, 71 Hamilton St. N., Waterdown, Ontario L0R 2H0
Waterdown (905) 689-6618 Fax (905) 689-0990
Burlington (905) 336-2055 Fax (905) 336-4236
Aldershot (905) 639-5270 Fax (905) 639-0499

John Marriage

EVENTS

One of a Kind

Christmas Canadian Craft Show & Sale
Thursday November 26 - Sunday December 6

Weekdays 11am - 10pm

Saturdays 10am - 10pm

Sundays 10am - 7pm

National Trade Center, Exhibition Place, Toronto
Admission Adults \$9.00, Seniors & Youth \$ 6.50
www.oneofakindshow.com

HAMILTON WOOD SHOW

January 29, 30, 31

Friday January 29 - 1 pm - 9 pm

Saturday January 30 - 9 am - 5 pm

Sunday January 31 - 9 am - 5 pm

Canadian Warplane Heritage Museum

(at the Hamilton Airport)

(905) 575-0450

www.canadianwoodworking.com

KITCHENER WATERLOO WOOD SHOW

March 19, 20, 21

Friday March 19 - 12 noon - 9 pm

Saturday March 20 - 10 am - 6 pm

Sunday March 21 - 10 am - 6 pm

Bingeman Park, 1380 Victoria St. N (Hwy 7)

Kitchener, Ontario

(519) 657-8646

www.anglefire.com/biz/woodshows

PROGRAM AT THE GHWG

DECEMBER 10

GHWG Christmas Party
(see the notice on
the second page)

JANUARY 21, 1999

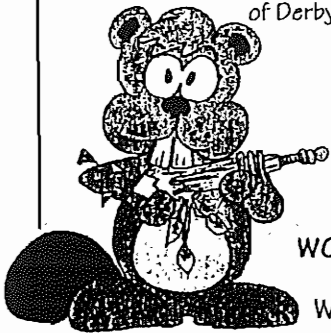
Annual Meeting

Bi Annual Elections

Turning demonstration by Josh Pichanick

WOODTURNING SUPPLIES

All the popular products of Craft Supplies of Derbyshire England are now in Canada.



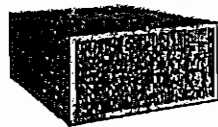
- Lathe and Carving Tools
- Exotic Woods
- Chucks & Lathe Accessories
- Pen, Pencil, Jewelry Parts

Send for a catalogue today
1-800-551-0192

WOODCHUCKER'S SUPPLIES
1698 WESTON RD.
WESTON, ONTARIO, M9N 1V6

Spring Specials

Air Cleaning System



\$265
Model B2055



This unit has a capacity of 510 CFM and is suitable for a room as big as 4000 cu.ft. It has 1/4 HP low noise motor.

Dust Collector

1 HP

\$265
Model B1140

Motor
1 HP,
110V
Single
Phase,
590 CFM

FREE!
Over \$30.00 worth
of accessories
with purchase.

Dust Pick Up & Stand



\$65

Model B1681
Reg. \$85.00

- *11" x 2" cast aluminum pick up for 4" hose
- *Adjustable height: 30" - 50"

Busy Bee Tools

Toronto Location
385 Norfinch Drive
North York, Ont. M3N 1Y7
TEL: (416) 665-8008
FAX: (416) 665-8337

London Location
1909 Oxford St. East #29-31
London, Ont. N5V 2Z7
TEL: (519) 659-9868
FAX: (519) 659-0771

Visit Our
Showroom
For Hundreds
Of Other
Specials!

Prices subject
to change
without notice

THE Right TOOLS. THE Right PEOPLE. THE Right PRICE.

WOODHAVEN

DOMESTIC WOODS & BURLS

NEW!

We now carry

Woodcut Tools

- Midget, Cobra & Pro-Master hollowing tools
- Bowl Saver

HOURS

Thurs. & Fri. 10 am - 5 pm
Saturday 10 am - 3 pm

(905) 331-0085
6618 MCNIVEN RD.
KILBRIDE LOP 1G0

FOR SALE

Lathe

The GHWG wants to sell the "Taiwan" lathe we have been using for Hands On night. This is an excellent beginners lathe and a great buy.

12" dia., 36" long bed,
3/4" HP motor, 5 speeds
3/4" spindle, takes #1 Morse Taper
\$ 100.00 includes table.
Call Jim Campbell 905 824 4435

FOR SALE

Union Graduate Bowl lathe

with 5' bed

\$3500

Michael Hartman (Woodworker's Haven)
519 884 5401

FOR SALE

Edge Sander

6" x 42" Belt, 1 HP motor, 3 extra belts

\$ 300.00

Call Doug Newlove
416 622-3248

FOR SALE

Radial Arm Saw

Black and Decker 10"
wired for 220

Planer Moulding guard, stand and extras

\$ 550 00 or best offer

Call John at 905 389 2645

FOR SALE

Craftsman Vacuum System

Comes complete with Gates, Pipes, etc.

\$ 50.00

Call Joe Golfi 905-765-1863 (Home)
905-523-4103 (Bus.)

Acting President

Treasurer

Vice President

Secretary

Membership Secretary

Member at Large

Equipment Manager

Casual Night Coordinator

Newsletter Editor

Brian Graham

Ken McCuaig

Kevin Ellis

Al McBurney

Cliff Rose

Mary Muir

Jim Campbell

Jim Wright

Frank Ditomaso

NEWSLETTER SUBMISSIONS

If you have any articles, ideas, items (wood, tools, etc.) for sale, articles wanted, etc., please contact me and I will add it to the next newsletter. Please try to get this to me by the end of the month.

Frank Ditomaso, Editor
905-335-5391 (Evening)
905-548-7014 (Weekdays)

WOLOK HOOK TOOL

PRIMARY USES:

- **Removal of end grain**
- **Production of smooth finish**

The Hook Tool also is efficient for side grain turning. In addition, when a bowl gauge becomes unsafe to use because of depth or other factors, the Hook Tool is an excellent substitute.

I still use machinist tool bits and bent tools when encountering hard knots and undercutting rolled edges or on closed forms with sharp angles from the mouth.

DIRECTIONS:

Caution: The Hook Tool is used in a vertical position or slightly tilted back from the top. NEVER USE HORIZONTALLY!

1. Drill the centering hole as true as possible. If the hole has been drilled off center, the Hook Tool will bang the sides until the hole is true.
2. The tool rest should be positioned above center.
*Note: a) The Hook Tool cuts best between 9:00 and 6:00.
b) The Hook Tool is about a one-fourth inch diameter; therefore, you can only cut one-fourth inch deep. If you try to take a deeper cut, you will run out of cutting edge.*
3. Start cutting from the bored hole straight across by slightly pushing (similarly to riding a bevel on a gauge) against the edge of the tool.
4. When you reach the wall thickness you desire or when the tool stops sliding towards the side, then (in a vertical position---not riding the bevel), draw the tool toward the front. When the tool is working at its optimum, it will draw itself towards the rear.
5. As you get deeper, you may have to adjust the tool rest to a higher position.

FURTHER SUGGESTIONS:

There really are no rigid rules on tool position except that it is not designed to operate in a horizontal position.

I hold the Hook Tool under my armpit so that the tool is vertical or slightly tipped, until I get a good cut.

If the tool stops cutting and is scraping, I drop the hook down below the 9:00 position. If the trouble persists, make sure the tool is sharp. If sharpness is not the problem, you may have to change the angle to the right or left.

I have done many Workshops on making and using the Hook Tool and almost all other aspects of wood turning.

Contact me during the day by phone or anytime by FAX. I will be happy to talk you through any problems.

MITCH WOLOK
3478 North East 12th Terrace
Oakland Park, FL 33334

Tel./FAX: (954) 568-0049